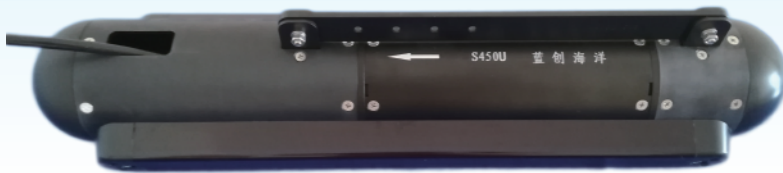




## Shark-U SERIES

[www.lcsonar.com](http://www.lcsonar.com)



High quality image  
Low power consumption  
Cost-effective,affordable  
Small,lightweight and easy

U Series side scan sonar can transmit the CW or CHIRP signal. The echo signal was sent to the deck unit by towfish through the underwater cable after receiving and processing, then processed by the sonar display-control software and generate the high resolution imaging data which can be saved to OTSS and XTF formats used to replay. Chirp technology can help enhancing the detection range of this system and achieving higher resolution data in bigger range.

With compact and portable design, the sonar is Reliable & durable, and can be easily operated by a single person. It can be fixed onto the bottom or side of the boat.

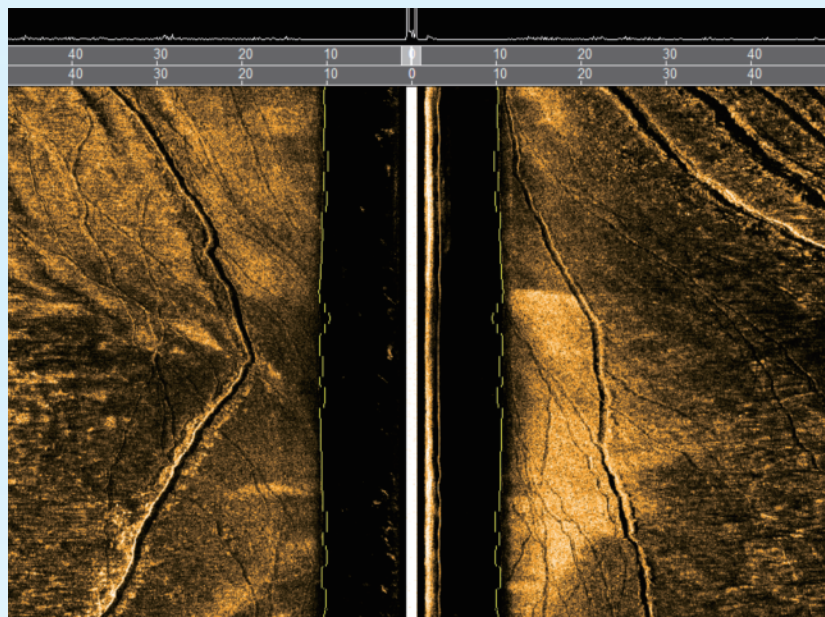
OTech® software is equipped with the function of sonar image display, navigation, data recording & replay, target management & output and sensor information multi-window display. It can output the data with standard formats which can be processed with the third party processing software, and also can be customized according to the requirements.

### Features

- Enhanced resolution at long range
- Broadband CHIRP technology
- OTech® acquisition software
- Simple Operation

### Applications

- Hydrographic Surveys
- Geophysical Surveys
- Cable and Pipeline Surveys
- Dredging Surveys
- Pier/Harbor Wall Inspections
- AUV/ROV Integration





# Shark-U SERIES

www.lcsonar.com

Sonar Specifications	Shark-S450U	Shark-S900U
Frequency	450kHz	900kHz
Pulse Type	CW/LFM ( CHRIP )	
Maximum Range	150m	75m
Beam Width	Horizontal : 0.3° ; Vertical : 45°	Horizontal : 0.2° ; Vertical : 45°
Resolution ( h-range )	Along track : 0.005h Across track : 1.25cm	Along track : 0.003h Across track : 1.25cm
Depression Angle	15°	
Depth Rating	100m	
Towfish Size/Weight(air)	637mm*105mm(length*D)/6kg	
Towfish1 Size/Weight(air)	517mm*58mm(length*Width)/2kg	317mm*58mm(length*Width)/1.5kg
Towfish2 Size/Weight(air)	200mm*155mm(length*Width)/1.7kg	
Deck Unit Size/Weight	240mm*105mm(length*D)/2.1kg	
Power Consumption	DC24V Input,15W	
Software OTech®	Windows , NMEA 0183 Navigation Data Input OTSS、 XTF Output Data Format	
Tow Cable	Kevlar,2m ( Option )	

